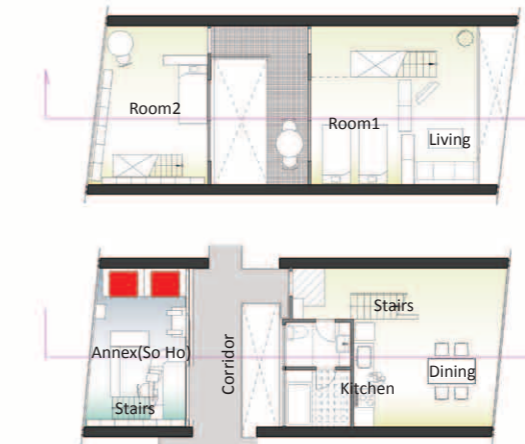
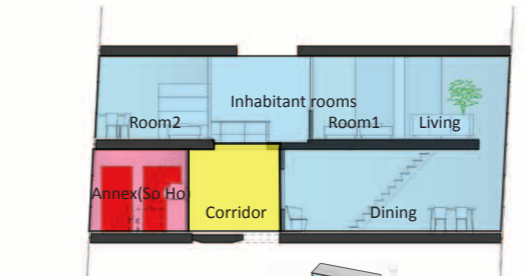


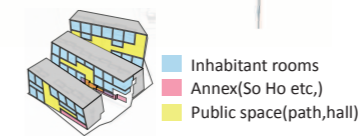
Edge of the sky



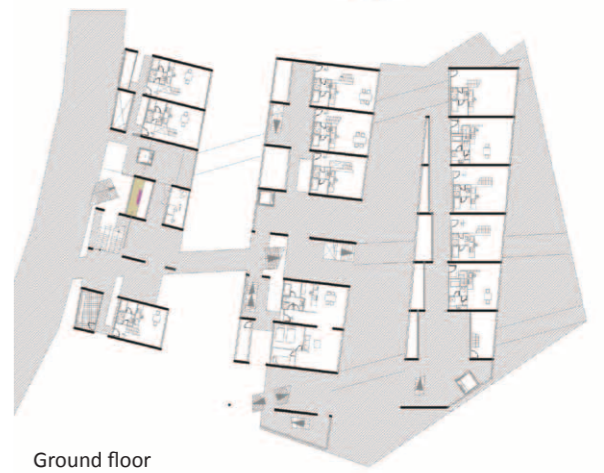
Typical unit-plan



Typical unit-plan section



First floor



Ground floor

Twister collective housing

This apartment is in the corner of a residential area in Tokyo, and housing for one-person households. The neighboring topography is sloping, and the streets are complicatedly crossed and stretched.

The building of this apartment is twisted. (fig:1 fig:2) By this, each housing unit can be lighted (fig:3), and does not face each other. Twisted form creates moderate sense of distances between units. Just look up it, you will be impressed by the mysteriously trimmed sky.

Twisted Facade seems to be a section of a city cut at random. (fig:4) this section enables a live-alone who has little relationship with the local community to re-associate with it. In fact, this facade expose activity of inhabitants with shape mosaic.

We get strongly aware of twisted form of this building in daily life. The facade glass which this building is wrapped with is warped; inhabitants daily touch that shape. Local habitats and residents can see diffused lights that are reflected by facade glass. Those impressions get the people to feel uneasy about the building.

The whole sight get people conscious of "artificiality" of vertically build-stock that look like "books piled up at the bookstore". (fig:1) This building is totally new space in which people see an infrastructure peculiar petal urban areas; "mass-housing".

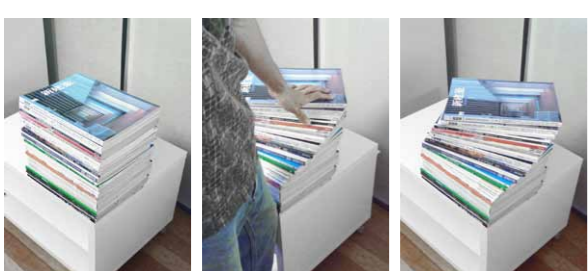


fig : 1

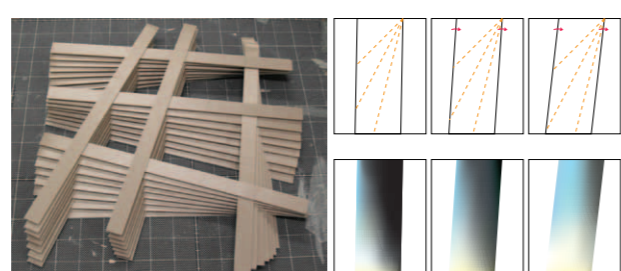
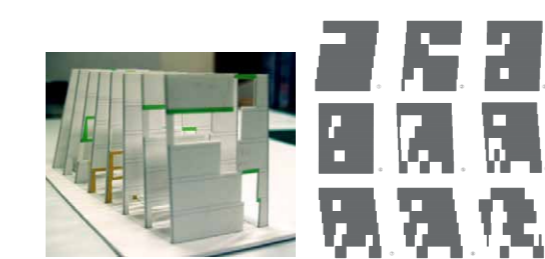


fig : 2



fig : 4

Volume model



Structure wall studies



Section